

Sir Roger Manwood's School



Welcome

Established in 1563, Sir Roger Manwood's School has a reputation for preparing the boys and girls of East Kent for successful future lives,. Through outstanding results and development of important such as leadership and communication, Old Manwoodians routinely go on to achieve success both locally and nationally.

Manwood's is a caring and inclusive community, with a broad and rigorous curriculum, coupled with a rich extra-curricular programme that champions participation in sport, the arts and a host of clubs.



Autumn Open Mornings

- 18th September 2026
- 9th October 2026
- 16th October 2026

Excellence in all

Our ethos and values

Built on mutual respect and understanding, our community value, underpin the personal development programme and how we interact with one another:

- Compassion
- Courage
- Creativity
- Resilience
- Respect
- Responsibility



“...that’s why I love Manwood’s... there are always so many things to get involved in that each year is more rewarding than the last ... one of my favourite things... is its sense of community; everyone looks after one another and the passion and kindness of the staff rub off on the students.” Old Manwoodian

Excellence in all

Supporting transition

- We support our pupils' transition from primary to secondary so that they feel confident and ready to start with us in September.
- In the summer term, members of the pastoral team visit all of our primary schools so that our new starters can get to know them and find out more about Manwood's.
- We run an induction evening for parents and pupils in June to provide further information and allow pupils to meet one another and for
- On the Induction Day in July, pupils find out which form they are in and spend a day at the school, meeting their Form Tutor and fellow pupils while they also sample some lessons.
- Our AEN coordinator visits each pupil with special needs to talk to them and their current school about their needs, so that provision is in place



Excellence in all

Starting in September

When they start with us in September, year 7 pupils come in on a day where only one other year group is at school, ensuring a calm and supportive start. They are introduced to the timetable; given the chance to explore the school and find where their lessons will be; the school's standards of conduct and homework routines. We communicate with parents via the Class Charts app, which will update you on any achievement points or behaviour points that pupils receive in a day.

In the November following the start of the new school year, parents are invited to a Parents' Evening where they can meet the Form Tutor and the teachers of Mathematics, English, Science, French and Spanish. Later on in the year there will be another Parents' Evening attended by all subject teachers. In addition, parents will be sent information about their child's progress regularly throughout the year.

Reading: supporting your child's reading habit as they move into year 7 makes a huge difference to their literacy and performance at school. Please see our attached guide that outlines how to support this at home.

Homework is a partnership between teachers, pupils and parents. Teachers will set and mark it, pupils will do it, and we rely on parents to encourage their child and ensure that it is done on time. At the beginning of each year each student will be issued with a Student Planner for them to record their homework, and other events, so that parents can see what they are doing. Usually students will have two or three subjects a night, but not always written work. Parents are asked to sign the Student Planner each week, and if they have any queries call us immediately as most difficulties can be solved quickly and easily. Homework is vital, firstly in order to cover the syllabus, and secondly to help train the students to work unsupervised as part of their preparation for their A Level and university studies. Some teachers set homework via Google Classroom or other online learning platforms.

Engage...Explore...Excel...

A Manwood's education follows the three strands of our vision of Engage, Explore, Excel and is designed to enable students to fulfil their individual potential and to be ready to progress in whatever they do next; we value personal development as well as academic achievement.

To achieve their best, we believe students must first **Engage** with the school, staff and their learning which means being active and increasingly independent learners, keen for feedback and able to collaborate. Students will receive excellent teaching of a broad and deep curriculum, within an inclusive and supportive community, fostered by the house system which crosses year and class groups. There is a strong focus on safeguarding and on the emotional and physical well-being of everyone in our community. Manwood's attaches great importance to the ongoing development of all our staff, the enhancement of our facilities and the opportunities we can offer to our students. Links with parents, our alumni and the local community are actively sought and valued.

Manwood's is committed to the importance of allowing students to **Explore** both the subjects they study and themselves. They are encouraged to take risks with their learning and to challenge themselves. The school offers a wide range of extra-curricular activities, including Junior and Senior Charity committees, CCF, DoE, drama, music and a very full programme of sport. We organise an extensive range of overseas trips that broaden students' understanding of different environments and cultures. Students have the opportunity to try new things, to study in depth, and to develop skills in areas like leadership, problem solving and team work.

Our focus is on enabling our students to **Excel**. The school has high expectations of all its students, in behaviour, learning, and commitment to themselves, their fellow students and the wider community. Manwood's students will achieve the best they can academically, and will become adaptable, confident, independent, critical thinkers who can contribute to and flourish in the next phase of their lives, whether that be in further learning, training or in employment.

Excellence in all

Subjects

Pupils in Year 7 study English, Mathematics, Science (Biology, Chemistry, Physics), Art, Computer Science, Design Technology, Drama, French, Geography, History, Music, Physical Education, PSHCE (Physical, Social, Health, Careers Education) Religious Education and Spanish.

At GCSE, all students take GCSEs in English Literature, English Language, Mathematics, Triple or Double Science (decided in Year 9 based on attainment in Year 9) and one Modern Foreign Language (from French or Spanish). They then choose 4 more subjects from Art, Business Studies, Computer Science, Design Technology, Drama, French, Geography, History, Music, Physical Education, Religious Studies and Spanish. Students also have lessons in Religious Education, Physical Education and PSHCE.

Most students stay with us for A Levels, choosing 3 or 4 from the following: Art, Biology, Business Studies, Chemistry, Computer Science, Design Technology, Drama, Economics, English Literature, French, Geography, History, Mathematics, Further Mathematics, Physical Education, Physics, Politics, Psychology, Religious Studies, Sociology and Spanish. Students also have lessons in enrichment, supervised study sessions and regular lectures and some opt to study an Extended Project Qualification (EPQ).



Excellence in all

Extra-curricular

One of the guiding principles at Manwood's is that pupils should work hard, play hard and contribute to the School community at least as much as they take from it. This supports development of key skills that help our pupils stand out in their lives beyond school.



The extra-curricular life of the school is therefore very rich and an exceptionally wide range of sporting and cultural activities are on offer. These activities provide numerous opportunities for students to both develop new interests and to take on positions of responsibility.

There are extensive international ties, including annual visits to our twinned schools in The Gambia and India, to Austria (skiing), Paris, Barcelona, Naples (Year 10 French, Spanish and Geography respectively), Switzerland (Year 12 Geographers), Berlin (Year 11 History). Overseas day trips are run to Boulogne (for Year 8) and the Somme battlefields (for Year 9). English and Drama run trips to local plays, and Geography undertakes field trips to a variety of places – ranging from Stratford to Hastings. A mixed group of keen football and netball players will be visiting South Africa in the summer of 2026.

The school supports pupil premium students as much as possible to be able to access trips and clubs.

Excellence in all

Extra-curricular continued

Performing Arts

On the musical front, there are frequent concerts for choirs, orchestra, brass band, jazz band, rock bands, and soloists, with opportunities for all levels of competence to perform in public. Peripatetic teachers visit the School regularly to give lessons, as well as taking part in the evening concerts.

Drama is very strong within the school with productions each year and lively drama clubs. The school production is always a major tour de force playing to full houses.



Combined Cadet Force (Y8-13)

The CCF, in which both boys and girls participate, provides exciting opportunities on its Field Weekends, Adventure Training Weeks, and Annual Camps. The contingent currently numbers about 100.

Duke of Edinburgh's Award (Y9-13)

The Duke of Edinburgh's Award Scheme is very popular. In a normal year, about 100 register for the Bronze Award, 40 for Silver and 25 for Gold.



Excellence in all

Sport

The school has a strong tradition of extra-curricular sport, with county-level performances in hockey, cricket, trampolining, and, increasingly, football especially noteworthy. In 2026, our U14 girls won the Kent Cup and our teams are usually district champions in netball and rounders. In addition to the above, basketball, tennis and handball also feature during curriculum time.

Resources include:

- a brand new full sized astro pitch
- a purpose-built Sports Hall large enough for 4 badminton courts or a full size basketball court
- a gymnasium with small fitness suite
- 6 tennis courts, three of which are on a mini astroturf that doubles as a hockey practice facility
- extensive playing fields with a fully-equipped sports pavilion

Every year a number of pupils gain representative honours at area, county, and national level in a wide variety of sports. The School is very conscious of the value of physical fitness and the personal development fostered through sporting activity, whether in team games or in individual competition. A member of the current England Women's cricket team (Tammy Beaumont) is an Old Manwoodian.

Hockey in particular has enjoyed great success in recent years, and the School has produced junior international players, one of whom (Mel Clewlow) went on to represent Great Britain at senior level and competed at both the Sydney and Beijing Olympics.



Excellence in all

E-cubed diploma and clubs

A real feature of the Manwood's experience is the range of clubs and societies on offer. Participation in extra-curricular groups contributes towards completion of the E-cubed diploma, an award that recognises not only participation but also completion of a project each year on a specific theme.

Below is an example of some of the clubs and societies on offer.

Whole school	Maths
Art club	Orchestra
Book Club Y7+8	Science
CCF	Ukelele
Charity Committee	
Chess	Sports
Drama	Badminton
Eco Society	Basketball
Elastic Band	Football
Games/Puzzles	Netball
History Club	Rounders
Homework Club	Rugby
Law society	Table Tennis
Manwoodian Magazine Editorial team	Tennis

Excellence in all

Transport links

Many of our pupils use public transport to get to and from school. There are always lots of our pupils on the buses and trains

Bus

From Dover/Deal/Eastry direction (80, 80A, 81)

From Shepherdswell/ Eythorne/Elvington (88)

From Canterbury/Wingham direction (43, 43A)

The 95 bus from Aylesham goes as far as Sandwich Tech, short walk to SRMS.

Train

From Dover/Walmer/Deal direction arrives at 07:53

From Ramsgate via Minster arrives at 07:56

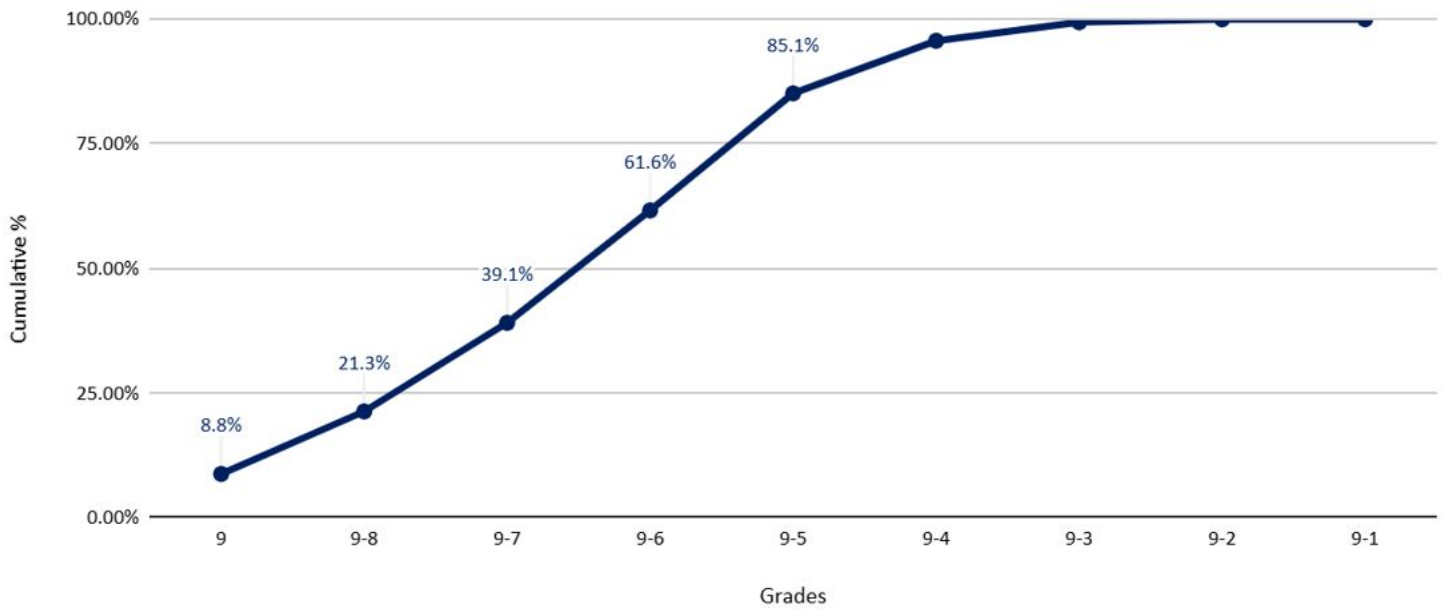
From Westgate/Margate/ Broadstairs via Minster direct arrives at 08:11.



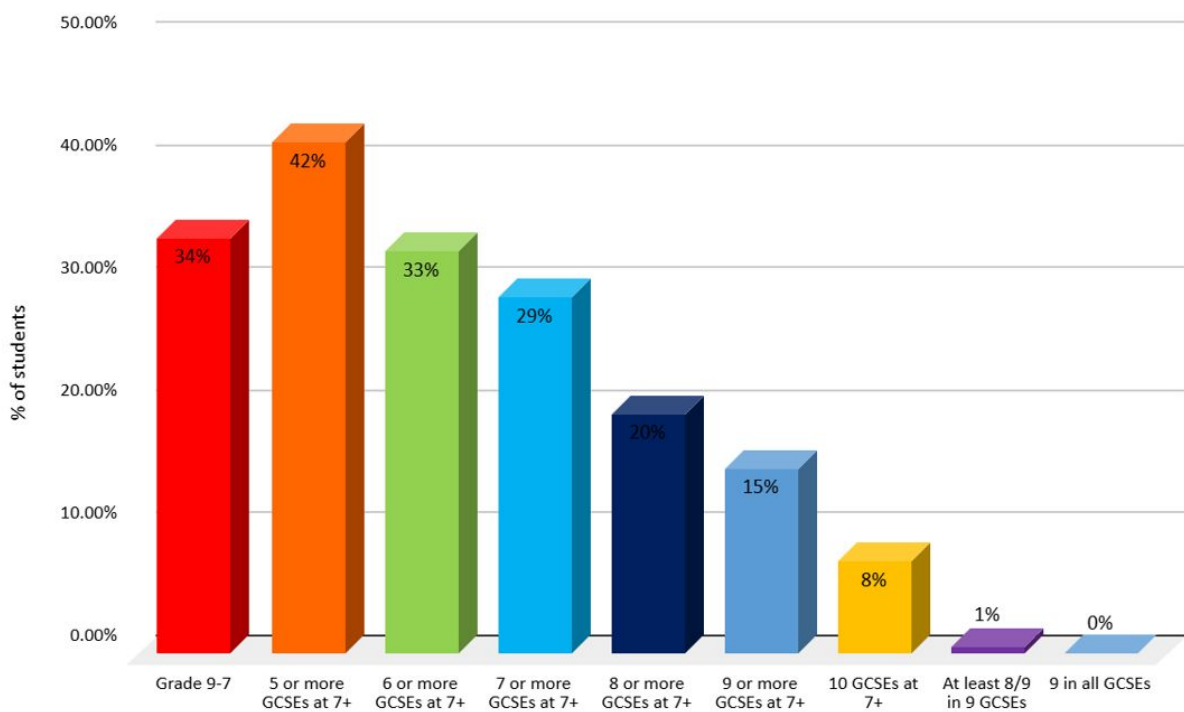
Excellence in all

GCSE Results

GCSE Results 2025 Cumulative %

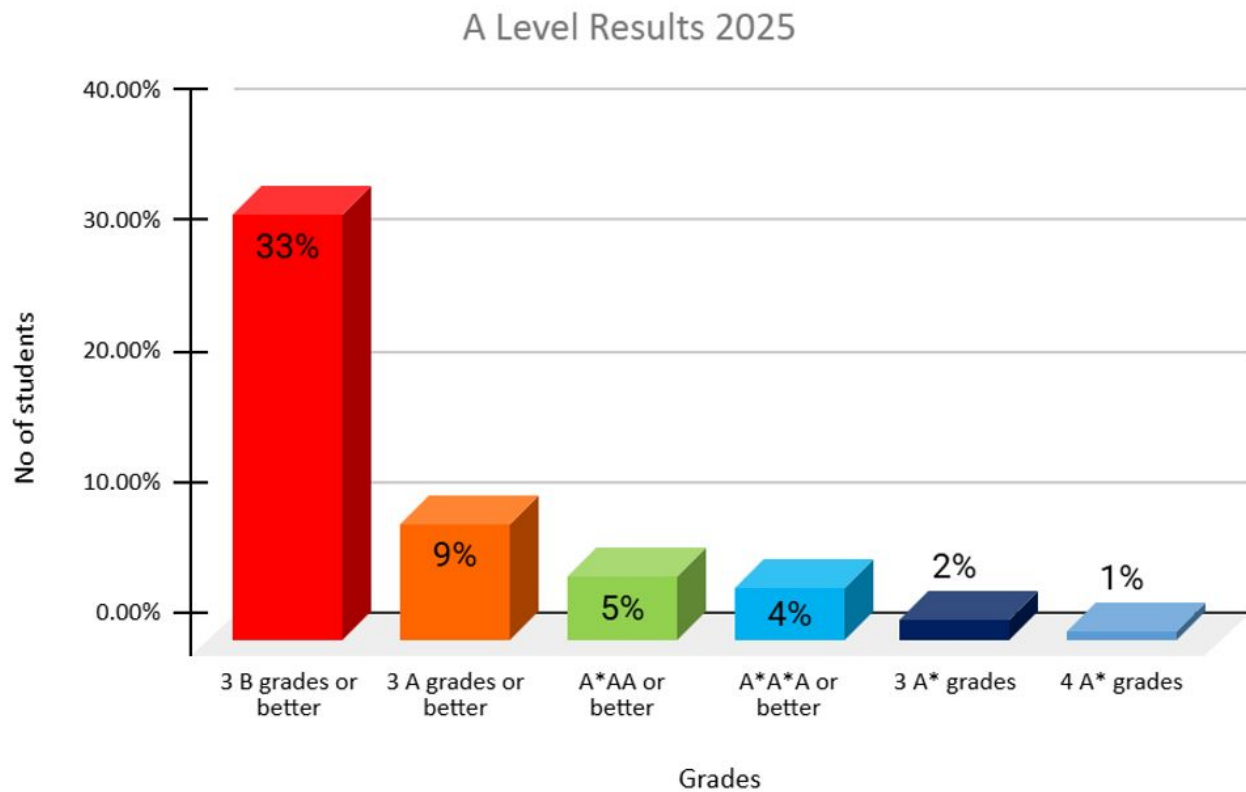
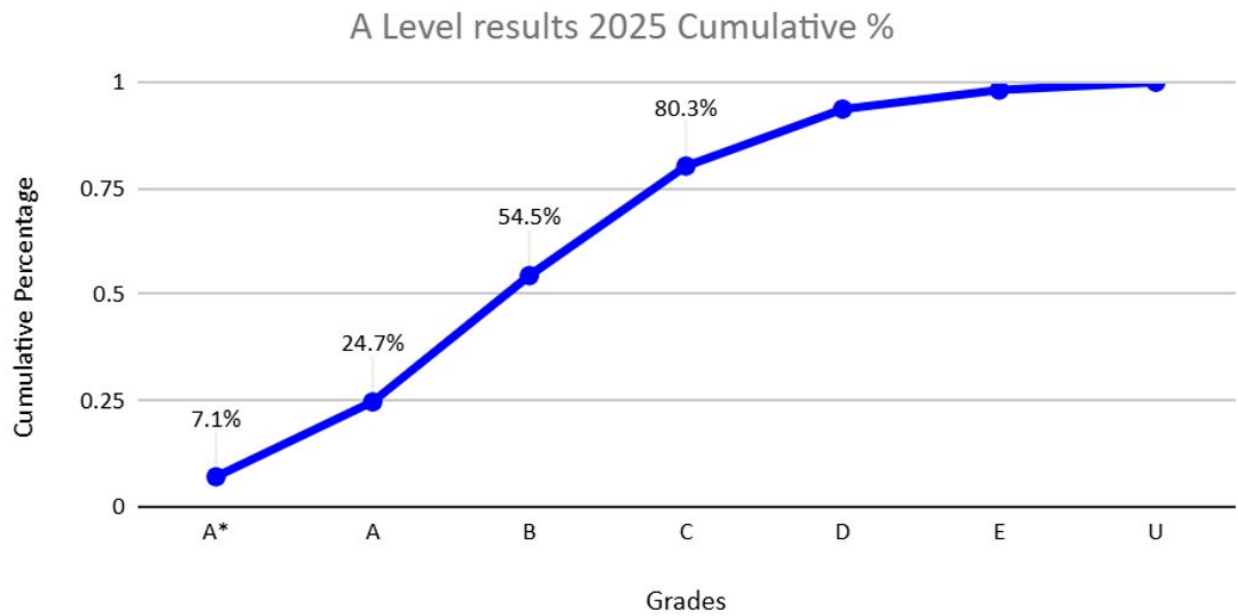


GCSE results 2025



Excellence in all

A Level Results



Excellence in all

Destinations

Destination of 2025 Leavers	
% Attending University	95%
% Studying at Oxbridge/Medicine/Vet Med	1%
% Studying at a Russell Group university	38%
% Entering the workplace	5%
% Following an Apprenticeship/College course	0%

Subjects studied by 2025 leavers			
Architecture and Surveying	1	Geography	1
Art and Design	6	History, Classics and Archaeology	8
Business, Economics, Finance and Marketing	15	Law	4
Computing	5	Mathematics	3
Criminology and Psychology	9	Medical related studies	6
Economics	5	MFL	1
Education	5	Politics & International Relations	6
Engineering	5	Sciences	10
English and Media	5	Social sciences	4
Film and Performing Arts	4	Sports & Physical education	4

Excellence in all



Should you have any further questions, please email
info@srms.kent.sch.uk

We look forward to welcoming you next September

Excellence in all