

# Sir Roger Manwood's School



## Safeguarding Policy

**Date written: October 2021**

**Date of Approval: October 2022**

**Next Review: October 2022**

This is a core policy that forms part of the induction for all staff. It is a requirement that all members of staff have access to this policy and sign to say they have read and understood its contents.

This policy will be reviewed at least annually and/or following updates to national and local guidance and procedures.

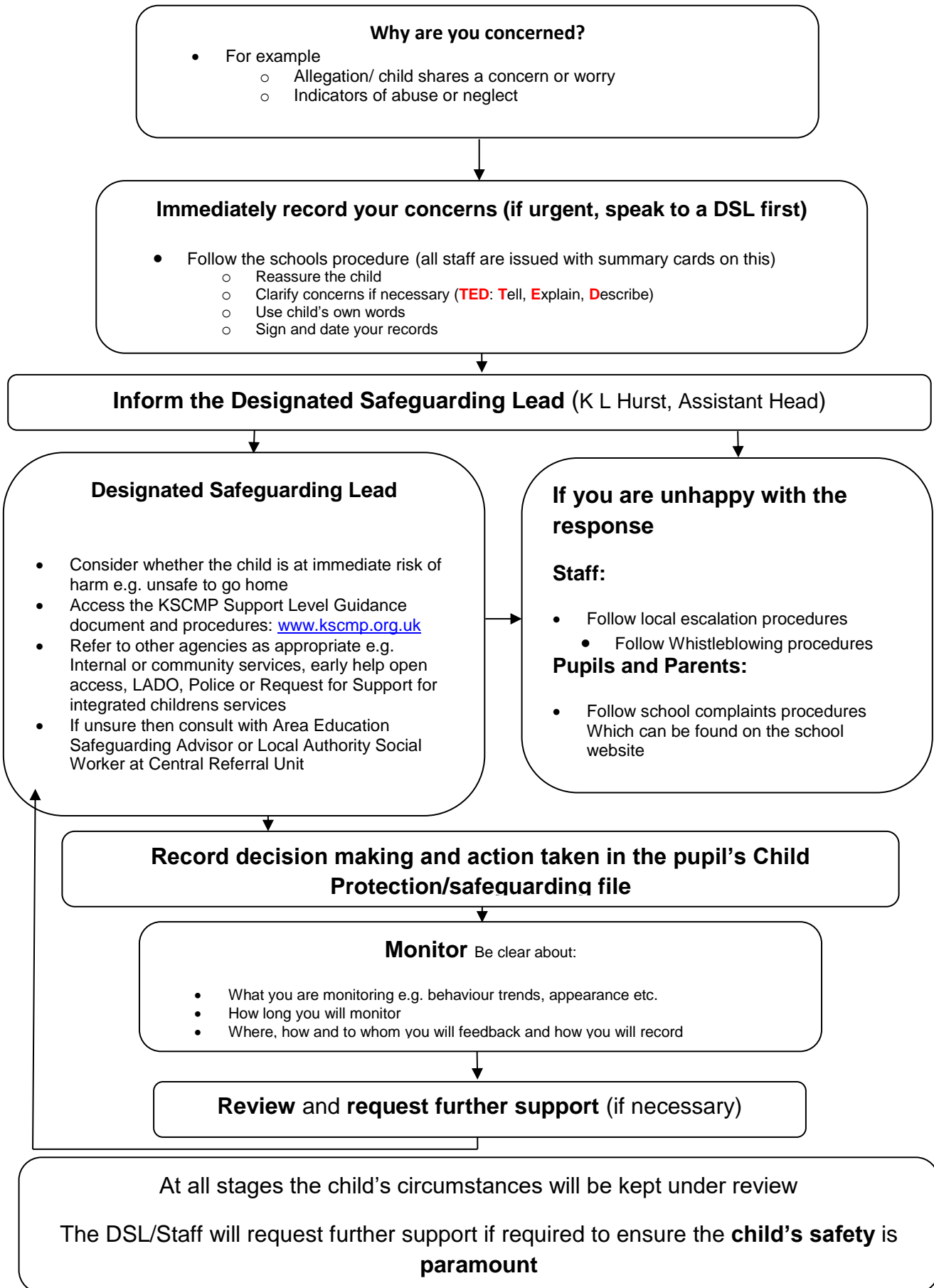
## Key Contacts

	Name	School contact information
<b>Designated Safeguarding Lead (DSL)</b>	K L Hurst	<a href="mailto:k.hurst@srms.kent.sch.uk">k.hurst@srms.kent.sch.uk</a> 01304 610 200
<b>Deputy Designated Safeguarding Lead</b>	C A Kernick	<a href="mailto:c.kernick@srms.kent.sch.uk">c.kernick@srms.kent.sch.uk</a> 01304 610 200
<b>Headteacher</b>	L J Hunter	<a href="mailto:head@srms.kent.sch.uk">head@srms.kent.sch.uk</a> 01304 610 200
<b>Safeguarding Governor</b>	J Maine	01304 610 200

# Contents

	<b>Page no</b>
What to do if you have a welfare concern - flowchart	4
1. Introduction and Ethos	5
2. Policy Context	5
3. Definition of Safeguarding	6
4. Related Safeguarding Policies	7
5. Policy Compliance, Monitoring and Review	7
6. Key Responsibilities	8
7. Recognising Indicators of Abuse and Neglect	10
8. Child Protection Procedures	11
9. Record Keeping	13
10. Multi-Agency Working	13
11. Confidentiality and Information Sharing	14
12. Complaints	14
13. Specific Safeguarding Issues	15
14. Supporting Children Potentially at Greater Risk of Harm	20
15. Staff induction, Awareness and Training	22
16. Safe Working Practice	23
17. Staff Supervision and Support	23
18. Safer Recruitment	23
19. Allegations Against Members of Staff and Volunteers	24
20. Online Safety	25
21. Curriculum and Staying Safe	28
22. The Use of Premises by Other Organisations	28
23. Security	28
24. Local Support	29
Appendix 1: Categories of Abuse	30
Appendix 2: National Support Organisations	33

## What to do if you have a welfare concern in Sir Roger Manwood's School



## 1. Introduction and Ethos

- Sir Roger Manwood's School recognise our statutory responsibility to safeguard and promote the welfare of all children. Safeguarding is everybody's responsibility and all those directly connected (staff, volunteers, governors, leaders, parents, families, and learners) are an important part of the wider safeguarding system for children and have an essential role to play in making this community safe and secure.
- Sir Roger Manwood's School believe that the best interests of children always come first. All children (defined as those up to the age of 18) have a right to be heard and to have their wishes and feelings taken into account and all children regardless of age, gender, ability, culture, race, language, religion or sexual identity, have equal rights to protection.
- Staff working with children Sir Roger Manwood's School will maintain an attitude of 'it could happen here' where safeguarding is concerned. When concerned about the welfare of a child, staff will always act in the best interests of the child and if any member of our community has a safeguarding concern about any child or adult, they should act and act immediately.
- Sir Roger Manwood's School recognises the importance of providing an ethos and environment within school that will help children to be safe and to feel safe. In our school children are respected and are encouraged to talk openly. We will ensure children's wishes and feelings are taken into account when determining what safeguarding action to take and what services to provide.
- Our core safeguarding principles are:
  - **Prevention**
    - positive, supportive, safe culture, curriculum and pastoral opportunities for children, safer recruitment procedures.
  - **Protection**
    - following the agreed procedures, ensuring all staff are trained and supported to recognise and respond appropriately and sensitively to safeguarding concerns.
  - **Support**
    - for all learners, parents and staff, and where appropriate specific interventions are required for those who may be at risk of harm.
  - **Working with parents and other agencies**
    - to ensure timely, appropriate communications and actions are undertaken when safeguarding concerns arise.
- The procedures contained in this policy apply to all staff, including and governors, temporary or third-party agency staff and volunteers) and are consistent with those outlined within KCSIE 2021.

## 2. Policy Context

- This policy is implemented in accordance with our compliance with the statutory guidance from the Department for Education, 'Keeping Children Safe in Education' 2021 (KCSIE) which requires individual schools and colleges to have an effective child protection policy.

- This policy has been developed in accordance with the principles established by the Children Acts 1989 and 2004 and related guidance. This includes but is not limited to:
  - Keeping Children Safe in Education 2021 (KCSIE)
  - Working Together to Safeguard Children 2018 (WTSC)
  - Ofsted: Education Inspection Framework' 2021
  - Framework for the Assessment of Children in Need and their Families 2000
  - Kent and Medway Safeguarding Children Procedures
  - Early Years and Foundation Stage Framework 2021 (EYFS)
  - The Education Act 2002
  - Education and Inspections Act 2006
  - The Non-Maintained Special Schools (England) Regulations 2015
  
- Section 175 of the Education Act 2002 requires school governing bodies, local education authorities and further education institutions to make arrangements to safeguard and promote the welfare of all children who are pupils at a school, or who are students under 18 years of age. Such arrangements will have to have regard to any guidance issued by the Secretary of State.
  
- Sir Roger Manwood's School is currently operating in response to coronavirus (Covid-19), however, our safeguarding principles, remain the same. We will continue to follow government guidance and will amend this policy and our approaches, as necessary.
  - As a result of the Covid-19 pandemic some members of our community may have been exposed to a range of adversity and trauma including bereavement, anxiety and in some cases increased welfare and safeguarding risks. We will work with local services, such as health and the local authority, to ensure necessary support is in place.

### **3. Definition of Safeguarding**

- In line with KCSIE 2021, safeguarding and promoting the welfare of children is defined for the purposes of this policy as:
  - Protecting children from maltreatment;
  - Preventing impairment of children's mental and physical health or development;
  - Ensuring that children grow up in circumstances consistent with the provision of safe and effective care; and
  - Taking action to enable all children to have the best outcomes.
  
- The school acknowledges that safeguarding includes a wide range of specific safeguarding issues including (but not limited to):
  - Abuse and neglect
  - Bullying, including cyberbullying
  - Children with family members in prison
  - Children Missing Education (CME)
  - Child missing from home or care
  - Child Sexual Exploitation (CSE)
  - Child Criminal Exploitation (CCE)
  - Contextual safeguarding (risks outside the family home)
  - County lines and gangs
  - Domestic abuse
  - Drugs and alcohol misuse

- Fabricated or induced illness
- Faith abuse
- Gender based abuse and violence against women and girls
- Hate
- Homelessness
- Human trafficking and modern slavery
- Mental health
- Nude or semi-nude image sharing, aka youth produced/involved sexual imagery or “Sexting”
- Online safety
- Peer on peer abuse
- Preventing radicalisation and extremism
- Private fostering
- Relationship abuse
- Serious violence
- Sexual violence and sexual harassment
- So-called ‘honour-based’ abuse, including Female Genital Mutilation (FGM) and forced marriage
- Upskirting

(Also see Part One and Annex B within ‘Keeping Children Safe in Education’ 2021)

#### **4. Related Safeguarding Policies**

- This policy is one of a series in the school’s integrated safeguarding portfolio and should be read and actioned in conjunction with the policies as listed below:
  - Anti-Bullying
  - Attendance
  - Behaviour
  - Data Protection
  - First Aid
  - Health and Safety, including plans for Sir Roger Manwood’s School reopening
  - Image use
  - Managing Allegations Against Staff
  - Online Safety; Social Media and Mobile Technology
  - Relationship and Sex Education (RSE)
  - Risk assessments (e.g. school trips, use of technology, school re-opening)
  - Safer Recruitment
  - Acceptable Use of Technology Policies (AUP)
  - Whistleblowing

#### **5. Policy Compliance, Monitoring and Review**

- Sir Roger Manwood’s School will review this policy at least annually (as a minimum) and will update it as needed, so that it is kept up to date with safeguarding issues as they emerge and evolve, including lessons learnt. The policy will also be revised following any national or local updates, significant local or national safeguarding events and/or learning, and/or any changes to our own procedures.

- All staff (including temporary staff and volunteers) will be provided with a copy of this policy and Part One and Appendix B of KCSIE 2021. This will be provided digitally to staff and can be found on the school website.
- Parents can obtain a copy of related policies on request. Additionally, our statutory policies can be viewed via the school website: <http://www.manwoods.co.uk/>
- The policy will be reviewed annually by the Governing Body which has responsibility for oversight of safeguarding and child protection systems.
- The Designated Safeguarding Lead will ensure regular reporting on safeguarding activity and systems in school to the Governing Body. The Governing Body will not receive details of individual learner situations or identifying features of families as part of their oversight responsibility.

## **6. Key Responsibilities**

### **6.1 Governance and Leadership**

- The Governing Body and leadership team have a strategic responsibility for our safeguarding arrangements and will comply with their duties under legislation.
- The Governing Body have regard to the KCSIE 2021 guidance and will ensure our policies, procedures and training is effective and complies with the law at all times.
- The school has a nominated governor for safeguarding. The nominated governor will support the DSL and have oversight in ensuring that the school has an effective policy which interlinks with other related policies, that locally agreed procedures are in place and being followed, and that the policies are reviewed at least annually and when required.
- The Governing Body and leadership team will ensure that the DSL is supported in their role and is provided with sufficient time so they can provide appropriate support to staff and children regarding any safeguarding and welfare concerns.
- The headteacher will ensure that our child protection and safeguarding policies and procedures adopted by the Governing Body, are understood, and followed by all staff.

### **6.2 Designated Safeguarding Lead (DSL)**

- The school has appointed a member of the leadership team (K L Hurst, Assistant Head) as the Designated Safeguarding Lead (DSL). Additionally, the school has appointed a Deputy DSL (C A Kernick, Deputy head) who will have delegated responsibilities and act in the DSL's absence.
- The DSL has the overall responsibility for the day to day oversight of safeguarding and child protection systems (including online safety) in school. Whilst the activities of the DSL may be delegated to the deputy, the ultimate lead responsibility for safeguarding and child protection remains with the DSL and this responsibility will not be delegated.
- The DSL will undergo appropriate and specific training to provide them with the knowledge and skills required to carry out their role. Deputy DSLs are trained to the same standard as the DSL. The



DSL and any deputy DSLs' training will be updated formally every two years, but their knowledge and skills will be updated through a variety of methods at regular intervals and at least annually.

- The DSL (and deputy) will be provided with sufficient time so they can provide appropriate support to staff and children regarding any new safeguarding and welfare concerns following Covid-19. This may include handling of referrals to integrated social care and working with other agencies where appropriate.
- **It is the role of the DSL to** carry out their functions as identified in Annex C of KCISE 2021. This includes but is not limited to:
  - Acting as the central contact point for all staff to discuss any safeguarding concerns
  - Maintaining a confidential recording system for safeguarding and child protection concerns
  - Coordinating safeguarding action for individual children
    - When supporting children with a social worker or looked after children the DSL should have the details of the child's social worker and the name of the virtual school head in the authority that looks after the child (with the DSL liaising closely with the designated teacher)
  - Liaising with other agencies and professionals in line with KCSIE 2021 and WTSC 2018
  - Ensuring that locally established procedures as put in place by the three safeguarding partners as part of the Kent Safeguarding Children Multi-Agency Partnership procedures (KSCMP), including referrals, are followed, as necessary.
  - Representing, or ensure the school is appropriately represented at multi-agency safeguarding meetings (including child protection conferences)
  - Managing and monitoring the school role in any multi-agency plan for a child.
  - Being available during term time (during school hours) for staff in the school to discuss any safeguarding concerns.
  - Helping promote educational outcomes by sharing the information about the welfare, safeguarding and child protection issues that children, including children with a social worker, are experiencing, or have experienced, with teachers and school leadership staff.
  - Ensuring adequate and appropriate DSL cover arrangements in response to any closures and out of hours and/or out of term activities.
  - Ensuring all staff access appropriate safeguarding training and relevant updates in line with the recommendations within KCSIE.
  - Informing the headteacher of any significant safeguarding issues.

### 6.3 Members of Staff

- All members of staff have a responsibility to:
  - Provide a safe environment in which children can learn.
  - Be aware of the indicators of abuse and neglect so that they can identify cases of children who may need help or protection.
  - Know what to do if a child tells them that he or she is being abused or neglected and understand the impact abuse and neglect can have upon a child.
  - Be able to identify and act upon indicators that children are, or at risk of developing mental health issues.
  - Be prepared to identify children who may benefit from early help.
  - Understand the early help process and their role in it.
  - Understand the school safeguarding policies and systems.
  - Undertake regular and appropriate training which is regularly updated.
  - Be aware of the local process of making referrals to children's social care and statutory assessment under the Children Act 1989.

- Know how to maintain an appropriate level of confidentiality.
- Reassure children who report concerns that they are being taken seriously and that they will be supported and kept safe.

## 6.4 Children and Young People

- Children and young people (learners) have a right to:
  - Feel safe, be listened to, and have their wishes and feelings taken into account.
  - Confidently report abuse, knowing their concerns will be treated seriously, and knowing they can safely express their views and give feedback.
  - Contribute to the development of school safeguarding policies.
  - Receive help from a trusted adult.
  - Learn how to keep themselves safe, including online.

## 6.5 Parents and Carers

- Parents/carers have a responsibility to:
  - Understand and adhere the relevant school policies and procedures.
  - Talk to their children about safeguarding issues with their children and support the school in their safeguarding approaches.
  - Identify behaviours which could indicate that their child is at risk of harm including online.
  - Seek help and support from the school or other agencies.

## 7. Recognition and Types of Abuse and Neglect

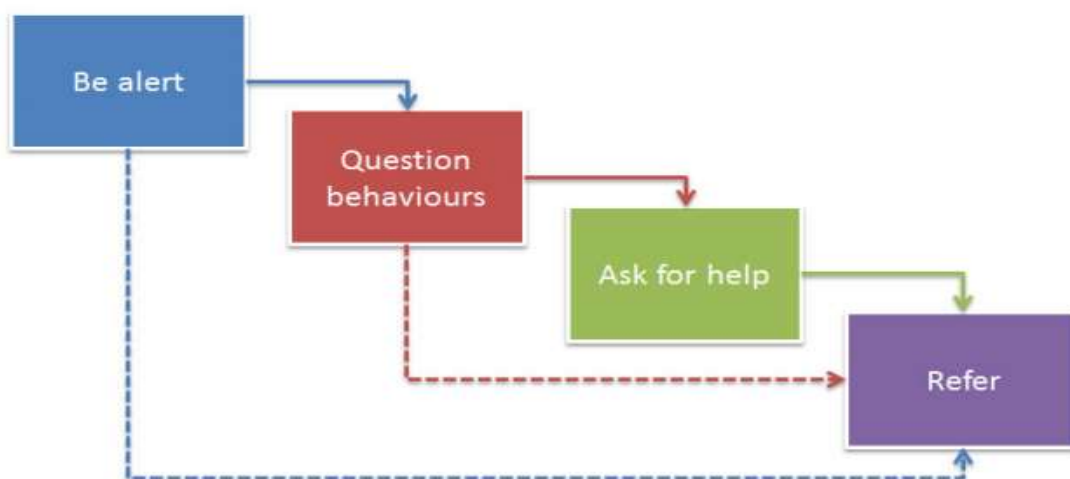
- All staff in school are made aware of the definitions and indicators of abuse and neglect as identified by Working Together to Safeguard Children (2018) and Keeping Children Safe in Education 2021. This is outlined locally within the [Kent Support Levels Guidance](#).
- Sir Roger Manwood's School recognises that when assessing whether a child may be suffering actual or potential harm there are four categories of abuse:
  - Physical abuse
  - Sexual abuse
  - Emotional abuse
  - Neglect

For further information see Appendix 1.

- Members of staff are aware that concerns may arise in many different contexts and can vary greatly in terms of their nature and seriousness. The indicators of child abuse and neglect can vary from child to child. Children develop and mature at different rates, so what appears to be worrying behaviour for a younger child might be normal for an older child.
- It is important to recognise indicators of abuse and neglect do not automatically mean a child is being abused however all concerns should be taken seriously and explored by the DSL on a case by case basis.
- Parental behaviours may also indicate child abuse or neglect, so staff should also be alert to parent-child interactions or concerning parental behaviours; this could include parents who are

under the influence of drugs or alcohol or if there is a sudden change in their mental health.

- Children may report abuse happening to themselves, their peers or their family members. All reports made by children to staff will be taken seriously and will be responded to in line with this policy.
- Safeguarding incidents and/or behaviours can be associated with factors outside the school and/or can occur between children offsite. Children can be at risk of abuse or exploitation in situations outside their families. Extra-familial harms take a variety of different forms and children can be vulnerable to multiple harms including (but not limited to) sexual exploitation, criminal exploitation, sexual abuse, serious youth violence and county lines.
- Technology can be a significant component in many safeguarding and wellbeing issues. Children are at risk of abuse online as well as face to face and in many cases, abuse will take place concurrently via online channels and in daily life. Children can also abuse their peers online.
- By understanding the warning signs, we can respond to problems as early as possible and provide the right support and services for the child and their family.
- All members of staff are expected to be aware of and follow this approach if they are concerned about a child:



'What to do if you are worried a child is being abused' 2015

- In all cases, if staff are unsure, they will always speak to the DSL (or deputy).

## 8. Child Protection Procedures

- If staff are made aware of a child protection concern, they are expected to:
  - listen carefully to the concern and be non-judgmental.
  - only use open questions to clarify information where necessary, e.g. who, what, where, when or Tell, Explain, Describe (TED).
  - not promise confidentiality as concerns will have to be shared further, for example, with the DSL and potentially Integrated Children's Services.
  - be clear about boundaries and how the report will be progressed.
  - record the concern in line with school record keeping requirements.
  - inform the DSL (or deputy), as soon as practically possible.

- The DSL or a deputy should always be available to discuss safeguarding concerns. If in exceptional circumstances, a DSL is not available, this should not delay appropriate action being taken. Staff should speak to a member of the senior leadership team and/or take advice from Education Safeguarding Service or via consultation with a social worker from the Front Door. In these circumstances, any action taken will be shared with a DSL as soon as is practically possible.
- Sir Roger Manwood's School recognises that some children have additional or complex needs and may require access to intensive or specialist services to support them.
- All staff are aware of the process for making a request for support referrals for statutory assessments under the Children Act 1989, along with the role they might be expected to play in such assessments.
- Sir Roger Manwood's School is an Operation Encompass School. This means we work in partnership with Kent Police to provide support to children experiencing domestic abuse.
- Sir Roger Manwood's School will respond to concerns in line with the Kent Safeguarding Children Multi-Agency Partnership procedures (KSCMP).
  - The full KSCMP procedures and additional guidance relating to reporting concerns and specific safeguarding issues can be found on their website: [www.kscmp.org.uk](http://www.kscmp.org.uk)
  - Specific information and guidance to follow with regards to accessing Early Help and Preventative Services and/or Children's Social Work Services as part of Integrated Children's Services (ICS) in Kent can be found here: [www.kelsi.org.uk/support-for-children-and-young-people/integrated-childrens-services](http://www.kelsi.org.uk/support-for-children-and-young-people/integrated-childrens-services)
- Sir Roger Manwood's School recognises that in situations where there are immediate child protection concerns identified in line with Support Level Guidance, it is NOT to investigate as a single agency but to act in line with KSCMP guidance which may involve multi-agency decision making.
- If a child is in immediate danger or is at risk of harm, a request for support should be made immediately to Integrated Children's Services (Front Door) and/or the police in line with KSCMP procedures.
- The DSL may seek advice or guidance from their Area Education Safeguarding Advisor from the Education Safeguarding Service before deciding next steps. They may also seek advice or guidance from a social worker at the Front Door service who are the first point of contact for Integrated Children's Services (ICS).
- In the event of a request for support to the Front Door being necessary, parents/carers will be informed and consent to this will be sought by the DSL in line with guidance provided by KSCMP. Parents/carers will be informed unless there is a valid reason not to do so, for example, if to do so would put the child at risk of harm or would undermine a criminal investigation.
- The DSL will keep all early help cases under constant review and consideration will be given to a request for support to the Front Door or seeking advice via the Education Safeguarding Service if the situation does not appear to be improving or is getting worse.

- If, after a request for support or any other planned external intervention, a child's situation does not appear to be improving or there is a concern regarding decisions made, the DSL will consider following KSCMP escalation procedures to ensure their concerns have been addressed and, most importantly, that the child's situation improves. DSLs may request support with this via the Education Safeguarding Service.

## 9. Record Keeping

- All safeguarding concerns, discussions and decisions, and reasons for those decisions, will be recorded in writing on the school safeguarding *My Concern* online recording system (any person connected to the school who does not have access to this should revert to the Green Form, found in the school office, staff room, and departmental areas, and digitally in the 'important documents' folder) and then pass them without delay to the DSL. A body map will be completed if injuries have been observed.  
If members of staff are in any doubt about recording requirements, they should discuss their concerns with the DSL.
- My Concern can be accessed online from any device (personal passwords maintain security). Backup Green Forms are found digitally in the school's 'important documents' folders, and in paper in the school office, staffroom and departmental areas.
- Records will be completed as soon as possible after the incident/event, using the child's words and will be signed and dated by the member of staff. Child protection records will record facts and not personal opinions. If there is an immediate concern the member of staff should consult with a DSL before completing the form as reporting urgent concerns takes priority.
- If members of staff are in any doubt about recording requirements, they will discuss their concerns with the DSL.
- Child protection records will include a clear and comprehensive summary of the concern, details of how the concern was followed up and resolved and details regarding any action taken, decisions reached and the outcome.
- Safeguarding records are kept for individual children and are maintained separately from all other records relating to the child in the school. Safeguarding records are kept in accordance with data protection legislation and are retained centrally and securely by the DSL. Safeguarding records are shared with staff on a 'need to know' basis only.
- All safeguarding records will be transferred in accordance with data protection legislation to the child's subsequent school, under confidential and separate cover. These will be given to the new DSL and a receipt of delivery will be obtained.
- In addition to the child protection file, the DSL will also consider if it would be appropriate to share any information with the DSL at the new school or college in advance of a child leaving. For example, information that would allow the new school or college to continue to provide support.
- Where the school receives child protection files, the DSL will ensure key staff will be made aware of relevant information as required.

## 10. Multi-agency Working

- Sir Roger Manwood's School recognises and is committed to its responsibility to work within the KSCMP multi-agency safeguarding arrangements. The leadership team and DSL will work to establish strong and co-operative local relationships with professionals in other agencies in line with statutory guidance.
- Sir Roger Manwood's School recognises the importance of multi-agency working and is committed to working alongside partner agencies to provide a co-ordinated response to promote children's welfare and protect them from harm. This includes contributing to KSCMP processes as required. Such as, participation in relevant safeguarding multi-agency plans and meetings, including Child Protection Conferences, Core Groups, Strategy Meetings, Child in Need meetings or other early help multi-agency meetings.

## 11. Confidentiality and Information Sharing

- Sir Roger Manwood's School recognises our duty and powers to hold, use and share relevant information with appropriate agencies in matters relating to child protection at the earliest opportunity as per statutory guidance outlined within KCSIE 2021.
- All staff must be aware that they cannot promise confidentiality in situations which might compromise the child's safety or wellbeing.
- The head teacher or DSL will disclose information about a learner on a 'need to know' basis.
- All members of staff must be aware that whilst they have duties to keep any information confidential, they also have a professional responsibility to share information with other agencies to safeguard children.
- Sir Roger Manwood's School has an appropriately trained Data Protection Officer (DPO) as required by the General Data Protection Regulations (GDPR) to ensure that our school is compliant with all matters relating to confidentiality and information sharing requirements:
  - Judicium Consulting Ltd, 72 Cannon Street, London, EC4N 6AE
  - Email: [dataservices@judicium.com](mailto:dataservices@judicium.com), Web [www.judiciumeducation.co.uk](http://www.judiciumeducation.co.uk)
  - Telephone: 0203 326 9174
- The Data Protection Act 2018 and GDPR do not prevent the sharing of information for the purposes of keeping children safe. Fears about sharing information must not be allowed to stand in the way of the need to safeguard and promote the welfare and protect the safety of children (KCSIE 2021).
- DfE Guidance on Information Sharing (July 2018) provides further detail. This information is kept in the staff room, school office, and available digitally under 'school policies' and 'important documents.'

## 12. Complaints

- The school has a Complaints Procedure available to parents, learners and members of staff and visitors who wish to report concerns. This can be found in the staff room, school office, school website and is available digitally under 'school policies' and 'important documents.'
- All reported concerns will be taken seriously and considered within the relevant and appropriate process. Anything that constitutes an allegation against a member of staff or volunteer will be dealt with under the specific Procedures for Managing Allegations against Staff policy. This can be found in the staff room, school office, school website and is available digitally under 'school policies' and 'important documents.'
- Whilst we encourage members of our community to report concerns and complaints directly to us, we recognise this may not always be possible. Children, young people, and adults who have experienced abuse at school can contact the NSPCC 'Report Abuse in Education' helpline on [0800 136 663](tel:0800136663) or via email: [help@nspcc.org.uk](mailto:help@nspcc.org.uk)
- Staff can also access the NSPCC whistleblowing helpline if they do not feel able to raise concerns regarding child protection failures internally. Staff can call 0800 028 0285 (8:00 AM to 8:00 PM Monday to Friday) or email [help@nspcc.org.uk](mailto:help@nspcc.org.uk).

## 13. Specific Safeguarding Issues

- Sir Roger Manwood's is aware of a range of specific safeguarding issues and situations that can put children at greater risk of harm. In addition to Part One, DSLs, school leaders and staff who work directly with children will read annex B of KCSIE 2021 which contains important additional information about specific forms of abuse and safeguarding issues.
- Where staff are unsure how to respond to specific safeguarding issues, they should follow the processes as identified in part 7 of this policy and speak with the DSL or a deputy.

### 13.1 Peer on Peer Abuse

- All members of staff at Sir Roger Manwood's School recognise that children are capable of abusing their peers, and that it can happen both inside and outside of school and online.
- The school recognises that peer on peer abuse can take many forms, including but not limited to:
  - Bullying, including cyberbullying, prejudice-based and discriminatory bullying
  - Abuse in intimate personal relationships between peers
  - Physical abuse which can include hitting, kicking, shaking, biting, hair pulling, or otherwise causing physical harm
  - Sexual violence and sexual harassment
  - Consensual and non-consensual sharing of nudes and semi-nude images and/or videos (also known as sexting or youth produced sexual imagery)
  - Causing someone to engage in sexual activity without consent, such as forcing someone to strip, touch themselves sexually, or to engage in sexual activity with a third party

- Upskirting (which is a criminal offence), which typically involves taking a picture under a person's clothing without their permission, with the intention of viewing their genitals or buttocks to obtain sexual gratification, or cause the victim humiliation, distress or alarm
- Initiation/hazing type violence and rituals
- The school believes that abuse is abuse and it will never be tolerated or dismissed as “banter”, “just having a laugh”, “part of growing up” or “boys being boys” as this can lead to a culture of unacceptable behaviours and an unsafe environment for children.
- The school recognises that even if there are no reported cases of peer on peer abuse, such abuse is still likely to be taking place.
- All staff have a role to play in challenging inappropriate behaviours between peers. Staff recognise that that some peer on peer abuse issues may be affected by gender, age, ability and culture of those involved.
- Concerns about learner's behaviour, including peer on peer abuse taking place offsite will be responded to as part of a partnership approach with learners and parents/carers. Offsite behaviour concerns will be recorded and responded to in line with existing appropriate policies, for example anti-bullying, acceptable use, and behaviour policies.
- In order to minimise the risk of peer-on-peer abuse, the school will implement a robust anti-bullying policy, provide an age/ability appropriate PSHE and RSE curriculum and encourage pupils to report concerns.
- Sir Roger Manwood's School wants children to feel able to confidently report abuse and know their concerns will be treated seriously. All allegations of peer on peer abuse will be reported to the DSL and will be recorded, investigated, and dealt with in line with associated school policies, including child protection, anti-bullying and behaviour. Learners who experience abuse will be offered appropriate support, regardless of where the abuse takes place.
- Alleged victims, perpetrators and any other child affected by peer on peer abuse will be supported. This is likely to include some or all of the following:
  - Providing pastoral support
  - Working with parents/carers
  - In cases of sexual assault, informing the police and/or Front Door.

### **13.2 Child on Child Sexual Violence or Harassment**

- When responding to concerns relating to child on child sexual violence or harassment, [the school](#) will follow the guidance outlined in Part Five of KCSIE 2021 and the DfE '[Sexual Violence and Sexual Harassment Between Children in Schools and Colleges](#)' guidance.
- Sir Roger Manwood's School recognises sexual violence and sexual harassment can occur between two children of any age and sex. It can occur through a group of children sexually assaulting or sexually harassing a single child or group of children and can occur online and face to face (both physically and verbally). Sexual violence and sexual harassment is never acceptable.



- All victims of sexual violence or sexual harassment will be reassured that they are being taken seriously and that they will be supported and kept safe. A victim will never be given the impression that they are creating a problem by reporting sexual violence or sexual harassment or be made to feel ashamed for making a report.
- When there has been a report of sexual violence or harassment, the DSL will make an immediate risk and needs assessment which will be considered on a case-by-case basis which explores how best to support and protect the victim and the alleged perpetrator (and any other children involved/impacted). The risk and needs assessment will be recorded and kept under review and will consider the victim (especially their protection and support), the alleged perpetrator, and all other children, and staff and any actions that are required to protect them.
- Reports will initially be managed internally by the school and where necessary will be referred to Integrated Children's Services and/or the Police. The decision making and required action taken will vary on a case by case basis, but will be informed by the wishes of the victim, the nature of the alleged incident (including whether a crime may have been committed), the ages and developmental stages of the children involved, any power imbalance, if the alleged incident is a one-off or a sustained pattern of abuse, if there are any ongoing risks to the victim, other children, adult students or school staff, and, any other related issues or wider context.
- If at any stage the DSL is unsure how to proceed, advice will be sought from the Education Safeguarding Service.

### **13.3 Nude and/or Semi-Nude Image Sharing by Children**

The term 'sharing nudes and semi-nudes' is used to mean the sending or posting of nude or semi-nude images, videos or live streams of/by young people under the age of 18. Creating and sharing nudes and semi-nudes of under-18s (including those created and shared with consent) is illegal which makes responding to incidents complex.

- Sir Roger Manwood's School recognises that consensual and non-consensual sharing of nudes and semi-nude images and/or videos (also known as youth produced/involved sexual imagery or "sexting") can be a safeguarding issue; all concerns will be reported to and dealt with by the DSL (or deputy).
- When made aware of concerns involving consensual and non-consensual sharing of nudes and semi-nude images and/or videos by children, staff are advised to:
  - Report any concerns to the DSL immediately.
  - Never view, copy, print, share, store or save the imagery, or ask a child to share or download it – this may be illegal. If staff have already viewed the imagery by accident, this will be immediately reported to the DSL.
  - Not delete the imagery or ask the child to delete it.
  - Not deliberately say or do anything to blame or shame any children involved.
  - Explain to child(ren) involved that they will report the issue to the DSL and reassure them that they will receive appropriate support and help.

- Not ask the child or children involved in the incident to disclose further information regarding the imagery and not share information about the incident with members of staff other than the DSL, the child(ren) involved or their, or other, parents and/or carers. This is the responsibility of the DSL.
- DSLs will respond to concerns as set out in the non-statutory UKCIS guidance: [Sharing nudes and semi-nudes: advice for education settings working with children and young people](#) and the local [KSCMP](#) guidance. When made aware of a concern involving consensual and non-consensual sharing of nudes and semi-nude images and/or videos:
  - The DSL will hold an initial review meeting to explore the context and ensure appropriate and proportionate safeguarding action is taken in the best interests of any child involved. This may mean speaking with relevant staff and the children involved as appropriate.
  - Parents and carers will be informed at an early stage and be involved in the process to best support children, unless there is good reason to believe that involving them would put a child at risk of harm.
  - All decisions and action taken will be recorded in line with our child protection procedures.
  - A referral will be made to ICS and/or the police immediately if:
    - The incident involves an adult (over 18).
    - There is reason to believe that a child has been coerced, blackmailed, or groomed, or there are concerns about their capacity to consent, for example, age of the child or they have special educational needs.
    - The image/videos involve sexual acts and a child under the age of 13, depict sexual acts which are unusual for the child's developmental stage, or are violent.
    - A child is at immediate risk of harm owing to the sharing of nudes and semi-nudes.
  - The DSL may choose to involve other agencies at any time if further information/concerns are disclosed at a later date.
  - If DSLs are unsure how to proceed, advice will be sought from the Education Safeguarding Service.

#### **13.4 Child Sexual Exploitation (CSE) and Child Criminal Exploitation (CCE)**

- Sir Roger Manwood's School recognises that CSE and CCE are forms of abuse that occur where an individual or group takes advantage of an imbalance in power to coerce, manipulate or deceive a child into taking part in sexual or criminal activity, in exchange for something the victim needs or wants, and/or for the financial advantage or increased status of the perpetrator or facilitator and/or through violence or the threat of violence. CSE and CCE can affect children, both male and female and can include children who have been moved (commonly referred to as trafficking) for the purpose of exploitation.
- If staff are concerned that a child may be at risk of CSE or CCE, immediate action should be taken by speaking to the DSL or a deputy.

#### **13.5 Serious Violence**

- All staff are made aware of the indicators which may signal children are at risk from or are involved with serious violent crime. These may include unexplained gifts or new possessions, increased absence from school, a change in friendships or relationships with older individuals or

groups, a significant decline in performance, signs of self-harm or a significant change in wellbeing, or signs of assault or unexplained injuries.

- Any concerns regarding serious violence will be reported and responded to in line with other child protection concerns.
- The initial response to child victims is important and staff will take any allegations seriously and work in ways that support children and keep them safe.

### **13.6 So-called honour based abuse**

- So-called 'honour'-based abuse (HBA) encompasses incidents or crimes which have been committed to protect or defend the honour of the family and/or the community, including female genital mutilation (FGM), forced marriage, and practices such as breast ironing.
- All forms of HBA are abuse (regardless of the motivation) and concerns should be responded to in line with section 3 of this policy. Staff will report any concerns about HBA to the DSL (or a deputy).
- Whilst all staff will speak to the DSL (or deputy) with regard to any concerns about female genital mutilation (FGM), there is a specific legal duty on teachers. If a teacher, in the course of their work in the profession, discovers that an act of FGM appears to have been carried out on a girl under the age of 18, the teacher must report this to the police.

### **13.7 Preventing radicalisation**

- Sir Roger Manwood's School is aware of our duty under section 26 of the Counter-Terrorism and Security Act 2015 (the CTSA 2015), to have "due regard to the need to prevent people from being drawn into terrorism", also known as the Prevent duty and the specific obligations placed upon us as an education provider regarding risk assessments, working in partnership, staff training, and IT policies.
- The school recognises that children are vulnerable to extremist ideology and radicalisation and staff will be alert to changes in children's behaviour which could indicate that they may be in need of help or protection.
- Staff will report any concerns to the DSL (or a deputy), who is aware of the local procedures to follow.

### **13.8 Cybercrime**

- Sir Roger Manwood's School recognises that children with particular skill and interest in computing and technology may inadvertently or deliberately stray into 'cyber-enabled' (crimes that can happen offline but are enabled at scale and at speed online) or 'cyber dependent' (crimes that can be committed only by using a computer/internet enabled device) cybercrime.
- If staff are concerned that a child may be at risk of becoming involved in cyber-dependent cybercrime, the DSL will be informed, and consideration will be given to accessing local support and/or referring into the Cyber Choices programme, which aims to intervene when young people are at risk of committing, or being drawn into, low level cyber-dependent offences and divert them

to a more positive use of their skills and interests.

- Where there are concerns about 'cyber-enabled' crime such as fraud, purchasing of illegal drugs online, child sexual abuse and exploitation, or other areas of concern such as online bullying or general online safety, they will be responded to in line with this and other appropriate policies.

## **14. Supporting Children Potentially at Greater Risk of Harm**

- Whilst all children should be protected, some groups of children are potentially at greater risk of harm.

### **14.1 Safeguarding Children with Special Educational Needs or Disabilities (SEND)**

- Sir Roger Manwood's School acknowledges that children with special educational needs or disabilities (SEND) or certain health conditions can face additional safeguarding challenges and barriers for recognising abuse and neglect.
- The school recognises that children with SEND may face additional communication barriers and experience difficulties in managing or reporting abuse or challenges. Children with SEND will be appropriately supported to communicate and ensure that their voice is heard and acted upon.
- All members of staff will be encouraged to appropriately explore possible indicators of abuse such as behaviour, mood changes or injuries and not to assume that they are related to the child's disability. Staff will be mindful that children with SEND or certain medical conditions may be disproportionately impacted by behaviours such as bullying, without outwardly showing any signs.
- Members of staff are encouraged to be aware that children with SEND can be disproportionately impacted by safeguarding concerns, such as exploitation, peer group isolation or bullying including prejudice-based bullying.
- To address these additional challenges, our school will always consider implementing extra pastoral support and attention for children with SEND.

### **14.2 Children Requiring Mental Health Support**

- All staff will be made aware that mental health problems can, in some cases, be an indicator that a child has suffered or is at risk of suffering abuse, neglect or exploitation.

- Staff are aware that children’s experiences, for example where children have suffered abuse and neglect, or other potentially traumatic adverse childhood experiences, can impact on their mental health, behaviour and education.
- Staff are well placed to observe children day-to-day and identify those whose behaviour suggests that they may be experiencing a mental health problem or be at risk of developing one.
- If staff have a mental health concern about a child that is also a safeguarding concern, immediate action should be taken by speaking to the DSL or a deputy.

### **14.3 Children Missing from Education**

- Children missing from education, particularly persistently, can act as a vital warning sign to a range of safeguarding issues including neglect, sexual abuse, and child sexual and criminal exploitation.
- Where the school/college have concerns that a child is missing from education, we will respond in line with our statutory duties and local policies. Local support is available via the [PRU, Inclusion and Attendance Service \(PIAS\)](#).

### **14.4 Elective Home Education**

- Where a parent/carer expresses their intention to remove a child from school with a view to educating at home, we will respond in line with [national Elective Home Education guidance](#) and local [Kent guidance](#) and will work together with parents/carers and other key professionals and organisations to ensure decisions are made in the best interest of the child.

### **14.5 Children who need a Social Worker**

- The DSL will hold details of social workers working with children in the [school](#) so that decisions can be made in the best interests of the child’s safety, welfare, and educational outcomes.
- Where children have a social worker, this will inform [school](#) decisions about their safety and promoting their welfare, for example, responding to unauthorised absence and provision of pastoral and/or academic support.

### **14.6 Looked after children, previously looked after children and care leavers**

- Sir Roger Manwood’s School recognises the common reason for children becoming looked after is as a result of abuse and/or neglect and a previously looked after child also potentially remains vulnerable.

- The school has appointed a 'designated teacher' (K L Hurst, Assistant Head) who works with local authorities to promote the educational achievement of registered pupils who are looked after or who have been previously looked after.
- The designated teacher (also DSL) will work to ensure appropriate staff have the information they need in relation to a child's looked after legal status, contact arrangements with birth parents or those with parental responsibility, care arrangements and the levels of authority delegated to the carer by the authority looking after them.
- Where a child is looked after, the DSL will hold details of the social worker and the name of the virtual school head in the authority that looks after the child.
- Where the school believe a child is being cared for as part of a private fostering arrangement (occurs when a child under 16 or 18 if the child is disabled is cared for and lives with an adult who is not a relative for 28 days or more) there is a duty to recognise these arrangements and inform the Local Authority via the front door.
- Where a child is leaving care, the DSL will hold details of the local authority Personal Advisor appointed to guide and support them and will liaise with them as necessary regarding any issues of concern.

## **15. Staff Induction, Awareness and Training**

- All members of staff have been provided with a copy of Part One of *Keeping Children Safe in Education* (2021) which covers Safeguarding information for all staff.
  - School leaders, including the DSL, will read the entire document.
  - School leaders and all members of staff who work directly with children will access Annex B within Keeping Children Safe in Education 2021.
  - All members of staff have given written confirmation that they have read and understood KCSIE. They have also taken a training module from GSHA (Grammar School Heads Association) with regards to the KCSIE 2021 changes and have supplied their certificate of completion.
- The DSL will ensure that all new staff and volunteers (including agency and third-party staff) receive child protection training to ensure they are aware of the school's internal safeguarding processes as part of their induction.
- In addition to specific child protection training, all staff will receive regular safeguarding and child protection updates (this will be achieved by email, e-bulletins, staff meetings) at least annually, to provide them with the relevant skills and knowledge to safeguard children effectively.
- All staff members (including agency and third-party staff) will be made aware of the school's expectations regarding safe and professional practice via the staff behaviour policy/or code of conduct and Acceptable Use Policy (AUP).

- Staff will be encouraged to contribute to and shape school safeguarding arrangements and child protection policies: this will be via input from knowledgeable and experienced staff, inviting input at staff meetings.
- The DSL and Head Teacher will provide an annual report to the Governing Body detailing safeguarding training undertaken by all staff and will maintain an up to date register of who has been trained.
- Although the school has a nominated lead for the governing body (J Maine), all members of the governing body will access appropriate safeguarding training which covers their specific strategic responsibilities on a regular basis.

## **16. Safe Working Practice**

- All members of staff are required to work within clear guidelines on Safe Working Practice as outlined in the school behaviour policy and Code of Conduct.
- Staff will be made aware of the school behaviour management and physical intervention policies. Staff will manage behaviour effectively to ensure a good and safe educational environment and will have a clear understanding of the needs of all children.
- All staff will be made aware of the professional risks associated with the use of social media and electronic communication (such as email, mobile phones, texting, social networking). Staff will adhere to relevant school policies including staff behaviour policy, Acceptable Use policies and Social Media.

## **17. Staff Supervision and Support**

- Any member of staff affected by issues arising from concerns for children's welfare or safety can seek support from the DSL.
- The induction process will include familiarisation with child protection responsibilities and procedures to be followed if members of staff have any concerns about a child's safety or welfare.
- The school will provide appropriate supervision and support for all members of staff to ensure that:
  - All staff are competent to carry out their responsibilities for safeguarding and promoting the welfare of children
  - All staff will be supported by the DSL in their safeguarding role.
  - All members of staff have regular reviews of their own practice to ensure they improve over time.
- The DSL will also put staff in touch with outside agencies for professional support if they so wish. Staff can also approach organisations such as their Union, the Education Support Partnership or other similar organisations directly.

## 18. Safer Recruitment

- Sir Roger Manwood's School is committed to ensuring a safe culture and that all steps are taken to recruit staff and volunteers who are safe to work with our pupils and staff.
- Sir Roger Manwood's School will follow relevant guidance in Keeping Children Safe in Education 2021 (Part 3 'Safer Recruitment') and from the Disclosure and Barring Service (DBS).
- The Governing Body and Leadership Team are responsible for ensuring that the school follows safe recruitment processes outlined within guidance.
- The school maintains an accurate Single Central Record (SCR) in line with statutory guidance.
- The Governing Body will ensure that at least one of the persons who conducts an interview has completed safer recruitment training.
- Sir Roger Manwood's School is committed to supporting the statutory guidance from the Department for Education on the application of the Childcare (Disqualification) Regulations 2009 and related obligations under the Childcare Act 2006 in schools.
- We advise all staff to disclose any reason that may affect their suitability to work with children including convictions, cautions, court orders, cautions, reprimands and warnings.
- We will ensure that all staff and volunteers have read the staff behaviour policy/code of conduct and understand that their behaviour and practice must be in line with it.

## 19. Allegations Against Members of Staff and Volunteers

- All staff and volunteers should feel able to raise concerns about poor or unsafe practice and potential failures in the school safeguarding regime. The leadership team at Sir Roger Manwood's School will take all concerns or allegations received seriously. The school will respond to allegations in line with the local Kent allegations arrangements and Part Four of KCSIE 2021.
- Any concerns or allegations about staff, including those which do not meet the allegation/harm threshold (19.2) will be recorded and dealt with appropriately in line with national and local guidance. Ensuring concerns are dealt with effectively will protect those working in or on behalf of the school from potential false allegations or misunderstandings.
- In the event of allegations of abuse being made against the head teacher, staff are advised that allegations should be reported to the Chair of Governors who will contact the LADO.
- All members of staff are made aware of the school Whistleblowing procedure. It is a disciplinary offence not to report concerns about the conduct of a colleague that could place a child at risk.
- Staff can access the NSPCC whistleblowing helpline if they do not feel able to raise concerns regarding child protection failures internally. Staff can call: 0800 028 0285 (8:00 AM to 8:00 PM Monday to Friday) or email: [help@nspcc.org.uk](mailto:help@nspcc.org.uk)



- Sir Roger Manwood’s School has a legal duty to refer to the Disclosure and Barring Service (DBS) anyone who has harmed, or poses a risk of harm, to a child, or if there is reason to believe the member of staff has committed one of a number of listed offences, and who has been removed from working (paid or unpaid) in regulated activity, or would have been removed had they not left. The DBS will consider whether to bar the person. If these circumstances arise in relation to a member of staff at our school, a referral will be made as soon as possible after the resignation or removal of the individual in accordance with advice from the LADO and/or Schools Personnel Service.

### **19.1 Concerns that meet the ‘harm threshold’**

- The school recognises that it is possible for any member of staff, including volunteers, governors, contractors, agency and third-party staff (including supply teachers) and visitors to behave in a way that indicates a person would pose a risk of harm if they continue to work in their present position, or in any capacity with children in a school or college. This includes when someone has
  - Behaved in a way that has harmed a child, or may have harmed a child and/or
  - Possibly committed a criminal offence against or related to a child and/or;
  - Behaved towards a child or children in a way that indicates he or she may pose a risk of harm to children; and/or
  - Behaved or may have behaved in a way that indicates they may not be suitable to work with children.
- Allegations against staff which meet this threshold will be referred immediately to the headteacher who will contact the LADO to agree further action to be taken in respect of the child and staff member. In the event of allegations of abuse being made against the headteacher, staff are advised that allegations should be reported to the chair of governors who will contact the LADO.

### **19.2 Concerns that do not meet the ‘harm threshold’**

- The school may also need to take action in response to ‘low-level’ concerns about staff, which typically would be behaviours which are inconsistent with our staff code of conduct, including inappropriate conduct outside of work and concerns that do not meet the allegations threshold.
- Where low-level concerns are reported to the school, the headteacher will to share or liaise with the LADO enquiries officer via the LADO Enquiry Line.
- Low-level concerns will be recorded in writing and reviewed so potential patterns of concerning, problematic or inappropriate behaviour can be identified. Where a pattern is identified, the school will implement appropriate action, for example consulting with the LADO enquiry line and following our disciplinary procedures.

## **20. Online Safety**

- It is recognised by Sir Roger Manwood’s School that the use of technology presents challenges and risks to children and adults both inside and outside of school. Sir Roger Manwood’s School

will empower, protect and educate the community in their use of technology and establish mechanisms to identify, intervene in and escalate any incident where appropriate.

- Sir Roger Manwood's School identifies that the breadth of issues classified with online safety is considerable, but can be categorised into three areas of risk:
  - Content: being exposed to illegal, inappropriate or harmful material; for example, pornography, fake news, racist or radical and extremist views;
  - Contact: being subjected to harmful online interaction with other users; for example, commercial advertising as well as adults posing as children or young adults; and
  - Conduct: personal online behaviour that increases the likelihood of, or causes, harm; for example, making, sending and receiving explicit images, or online bullying.
- The DSL has overall responsibility for online safeguarding within the school but will liaise as necessary with other members of staff.
- Sir Roger Manwood's School uses a wide range of technology. This includes laptops, computers and other digital services, the internet, our learning platform, intranet and email systems.
  - All school owned devices and systems will be used in accordance with our acceptable use policies and with appropriate safety and security measures in place.
  - Sir Roger Manwood's School recognises the specific risks that can be posed by mobile technology, including mobile phones and cameras and in accordance with KCSIE 2020 has appropriate policies in place that are shared and understood by all members of the school community.
  - Further information regarding the specific approaches relating to this can be found in the school's mobile technology, social media, acceptable use and image policies which can be found in the staff room/office, and digitally in 'important documents' and 'school policies.'
  - Sir Roger Manwood's School will do all it reasonably can to limit children's exposure to online risks through its IT systems and will ensure that appropriate filtering and monitoring systems are in place.
- Sir Roger Manwood's School uses *Rocket*.
  - *Rocket* blocks access to sites which could promote or include harmful and/or inappropriate behaviour or material. This includes content which promotes discrimination or extremism, drugs/substance misuse, malware/hacking, gambling, piracy and copyright theft, pro self-harm, eating disorders and/or suicide content, pornographic content and violent material.
  - *Rocket* is a member of the Internet Watch Foundation (IWF) and blocks access to illegal Child Abuse Images and Content (CAIC).
  - *Rocket* integrates the police assessed list of unlawful terrorist content, produced on behalf of the Home Office.
  - We work with EIS/Rocket to ensure that our filtering policy is continually reviewed to reflect our needs and requirements.
  - If learners or staff discover unsuitable sites or material, they are required to turn off monitor/screen, and report the concern immediately to a member of staff, who will report the URL of the site to the technical staff/services.
  - Filtering breaches will be reported to the DSL (or Deputy DSL) and technical staff, and will be recorded and escalated as appropriate.
  - Parents will be informed of filtering breaches involving learners.
  - Any access to material believed to be illegal will be reported immediately to the appropriate agencies, such as the IWF, the police and/or CEOP.

- All users will be informed that use of our systems can be monitored, and that monitoring will be in line with data protection, human rights and privacy legislation.
- When implementing appropriate filtering and monitoring, Sir Roger Manwood's School will ensure that 'over blocking' does not lead to unreasonable restrictions as to what children can be taught with regards to online teaching and safeguarding.
- Sir Roger Manwood's School acknowledges that whilst filtering and monitoring is an important part of the school's online safety responsibilities, it is only one part of our approach to online safety.
  - Learners will use appropriate search tools, apps and online resources as identified following an informed risk assessment.
  - Learners' internet use will be supervised by staff according to their age and ability.
  - Learners will be directed to use age-appropriate online resources and tools by staff.
- Sir Roger Manwood's School will ensure a comprehensive whole school curriculum response is in place to enable all pupils to learn about and manage online risks effectively as part of providing a broad and balanced curriculum. **DSLs and SLT will access UK Council for Internet Safety (UKCIS) 'Education for a Connected Framework' and DfE 'Teaching Online safety in school' for guidance.**
- Sir Roger Manwood's School will build a partnership approach to online safety and will support parents/carers to become aware and alert by:
  - Providing information on our school website and through existing communication channels (such as official social media, newsletters etc.), offering specific online safety update for parents/carers.
- Sir Roger Manwood's School will ensure that online safety training for all staff is integrated, aligned and considered as part of our overarching safeguarding approach.
- The DSL will respond to online safety concerns in line with the child protection and other associate policies such as anti-bullying and behaviour.
  - Internal sanctions and/or support will be implemented as appropriate.
  - Where necessary, concerns will be escalated and reported to relevant partner agencies in line with local policies and procedures.

### **Where children are asked to learn online at home in response to a full or partial closure:**

- Sir Roger Manwood's School will ensure that any remote sharing of information, communication and use of online learning tools and systems will be in line with privacy and data protection requirements.
- All communication with learners and parents/carers will take place using school provided or approved communication channels; school provided email accounts and phone numbers and agreed system – Google Classroom
  - Any pre-existing relationships or situations which mean this cannot be complied with will be discussed with the DSL.
- Staff and learners will engage with remote teaching and learning in line with existing behaviour principles set out in our school behaviour policy/code of conduct and Acceptable Use Policies.

- Staff and learners will be encouraged to report issues experienced at home and concerns will be responded to in line with our child protection and other relevant policies.
- When delivering remote learning, staff will follow our Remote Learning Acceptable Use Policy (AUP)
- Parents/carers will be made aware of what their children are being asked to do online, including the sites they will be asked to access. Sir Roger Manwood's School will continue to be clear which adults from the school their children is going to be interacting with online.
- Parents/carers will be encouraged to ensure children are appropriately supervised online and that appropriate parent controls are implemented at home.

Additional guidance for DSLs and SLT regarding remote learning is available at DfE: [Safeguarding and Remote Education During Coronavirus \(Covid-19\)](#) and the Education People: [Remote Learning Guidance for SLT](#).

## **21. Curriculum and Staying Safe**

- Sir Roger Manwood's School will ensure that children are taught about safeguarding, including online safety, as part of providing a broad and balanced curriculum.
- We recognise that schools play an essential role in helping children to understand and identify the parameters of what is appropriate child and adult behaviour; what is 'safe'; to recognise when they and others close to them are not safe; and how to seek advice and support when they are concerned.
- Our curriculum provides opportunities for increasing self-awareness, self-esteem, social and emotional understanding, assertiveness and decision making so that learners have a range of age appropriate contacts and strategies to ensure their own protection and that of others.
- Sir Roger Manwood's School is aware of the most recent communication from DfE on the mandatory implementation of Relationships Education, Relationships and Sex and health Education and will ensure that this is embedded into the curriculum.
- Our school systems support children to talk to a range of staff. Children will be listened to and heard and their concerns will be taken seriously and acted upon as appropriate.
- Our school recognises that a one size fits all approach may not be appropriate for all children, and a more personalised or contextualised approach for more vulnerable children, victims of abuse and some SEND children might be needed.

## **22. The Use of School Premises by Other Organisations**

- Where services or activities are provided separately by another body using the school premises, the head teacher and Governing Body will seek written assurance that the organisation concerned has appropriate policies and procedures in place with regard to safeguarding children and child protection and that relevant safeguarding checks have been made in respect of staff and volunteers.
- If this assurance is not achieved, then an application to use premises will be refused.

## **23. Security**

- All members of staff have a responsibility for maintaining awareness of buildings and grounds security and for reporting concerns that may come to light. Staff will be expected to adhere to any safety arrangements implemented because of Covid-19 restrictions.
- Appropriate checks will be undertaken in respect of visitors and volunteers coming into school as outlined within guidance. Visitors will be expected to sign in and out via the office visitors log and to display a visitor's badge whilst on school site. Visitors will be expected to adhere to any safety arrangements implemented because of Covid-19 restrictions.
- Any individual who is not known or identifiable should be challenged for clarification and reassurance.
- The school will not accept the behaviour of any individual (parent or other) that threatens school security or leads others (child or adult) to feel unsafe. Such behaviour will be treated as a serious concern and may result in a decision to refuse access for that individual to the school site.

## 24. Local Support

- All members of staff in Sir Roger Manwood's School are made aware of local support available.
  - **Contact details for Area Safeguarding Advisor (Education Safeguarding Service)**
    - [www.kelsi.org.uk/support-for-children-and-young-people/child-protection-and-safeguarding/safeguarding-contacts](http://www.kelsi.org.uk/support-for-children-and-young-people/child-protection-and-safeguarding/safeguarding-contacts)
  - **Contact details for South Kent**
    - 03000 415 648
  - **Contact details for Online Safety in the Education Safeguarding Service**
    - 03000 415 797
    - [esafetyofficer@theeducationpeople.org](mailto:esafetyofficer@theeducationpeople.org) (non-urgent issues only)
  - **Contact details for the LADO**
    - Telephone: 03000 410 888
    - Email: [kentchildrenslado@kent.gov.uk](mailto:kentchildrenslado@kent.gov.uk)
  - **Integrated Children's Services**
    - Front door: 03000 411 111
    - Out of Hours Number: 03000 419 191
  - **Kent Police**
    - 101 or 999 if there is an immediate risk of harm
  - **Kent Safeguarding Children Multi-agency Partnership (KSCMP)**
    - [kscmp@kent.gov.uk](mailto:kscmp@kent.gov.uk)
    - 03000 421 126
  - **Adult Safeguarding**
    - Telephone: Adult Social Care via 03000 416 161 (text relay 18001 03000 416 161)
    - Email: [social.services@kent.gov](mailto:social.services@kent.gov)

## Appendix 1: Categories of Abuse

**All staff should be aware that abuse, neglect and safeguarding issues are rarely standalone events that can be covered by one definition or label. In most cases, multiple issues will overlap with one another.**

**Abuse:** a form of maltreatment of a child. Somebody may abuse or neglect a child by inflicting harm or by failing to act to prevent harm. They may be abused by an adult or adults or another child or children. It should be noted that abuse can be carried out both on and offline and be perpetrated by men, women and children.

**Sexual abuse:** involves forcing or enticing a child or young person to take part in sexual activities, not necessarily involving a high level of violence, whether or not the child is aware of what is happening. The activities may involve physical contact, including assault by penetration (for example rape or oral sex) or non-penetrative acts such as masturbation, kissing, rubbing and touching outside of clothing. They may also include non-contact activities, such as involving children in looking at, or in the production of, sexual images, watching sexual activities, encouraging children to behave in sexually inappropriate ways, or grooming a child in preparation for abuse. Sexual abuse can take place online, and technology can be used to facilitate offline abuse. Sexual abuse is not solely perpetrated by adult males. Women can also commit acts of sexual abuse, as can other children.

### Signs that MAY INDICATE Sexual Abuse

- Sudden changes in behaviour and school performance
- Displays of affection which are sexual and age inappropriate
- Self-harm, self-mutilation or attempts at suicide
- Alluding to secrets which they cannot reveal
- Tendency to cling or need constant reassurance
- Regression to younger behaviour for example thumb sucking, playing with discarded toys, acting like a baby
- Distrust of familiar adults. Anxiety of being left with relatives, a child minder or lodger
- Unexplained gifts or money
- Depression and withdrawal
- Fear of undressing for PE
- Sexually transmitted disease
- Fire setting.

**Physical abuse:** a form of abuse which may involve hitting, shaking, throwing, poisoning, burning or scalding, drowning, suffocating or otherwise causing physical harm to a child. Physical harm may also be caused when a parent or carer fabricates the symptoms of, or deliberately induces, illness in a child.

### Signs that MAY INDICATE physical abuse

- Bruises and abrasions around the face
- Damage or injury around the mouth
- Bi-lateral injuries such as two bruised eyes
- Bruising to soft area of the face such as the cheeks

- Fingertip bruising to the front or back of torso
- Bite marks
- Burns or scalds (unusual patterns and spread of injuries)
- Deep contact burns such as cigarette burns
- Injuries suggesting beatings (strap marks, welts)
- Covering arms and legs even when hot
- Aggressive behaviour or severe temper outbursts.
- Injuries need to be accounted for. Inadequate, inconsistent or excessively plausible explanations, or a delay in seeking treatment should signal concern.

**Emotional abuse:** the persistent emotional maltreatment of a child such as to cause severe and adverse effects on the child's emotional development. It may involve conveying to a child that they are worthless or unloved, inadequate, or valued only insofar as they meet the needs of another person. It may include not giving the child opportunities to express their views, deliberately silencing them or 'making fun' of what they say or how they communicate. It may feature age or developmentally inappropriate expectations being imposed on children. These may include interactions that are beyond a child's developmental capability as well as overprotection and limitation of exploration and learning, or preventing the child from participating in normal social interaction. It may involve seeing or hearing the ill-treatment of another. It may involve serious bullying (including cyberbullying), causing children frequently to feel frightened or in danger, or the exploitation or corruption of children. Some level of emotional abuse is involved in all types of maltreatment of a child, although it may occur alone.

#### **Signs that MAY INDICATE emotional abuse**

- Over reaction to mistakes
- Lack of self-confidence/esteem
- Sudden speech disorders
- Self-harming
- Extremes of passivity and/or aggression
- Compulsive stealing
- Drug, alcohol, solvent abuse
- Fear of parents being contacted
- Unwillingness or inability to play
- Excessive need for approval, attention and affection.

**Neglect:** the persistent failure to meet a child's basic physical and/or psychological needs, likely to result in the serious impairment of the child's health or development. Neglect may occur during pregnancy, for example, as a result of maternal substance abuse. Once a child is born, neglect may involve a parent or carer failing to: provide adequate food, clothing and shelter (including exclusion from home or abandonment); protect a child from physical and emotional harm or danger; ensure adequate supervision (including the use of inadequate care-givers); or ensure access to appropriate medical care or treatment. It may also include neglect of, or unresponsiveness to, a child's basic emotional needs.

#### **Signs that MAY INDICATE neglect.**

- Constant hunger
- Poor personal hygiene



- Constant tiredness
- Inadequate clothing
- Frequent lateness or non-attendance at School
- Untreated medical problems
- Poor relationship with peers
- Compulsive stealing and scavenging
- Rocking, hair twisting and thumb sucking
- Running away
- Loss of weight or being constantly underweight
- Low self-esteem.

## Appendix 2: National Support Organisations

The following links may help DSLs provide further advice and support to their learners, staff and parents/carers. Additional links can be found in KCSIE 2021 in annex B and D.

### NSPCC 'Report Abuse in Education' Helpline

- [0800 136 663](tel:0800136663) or [help@nspcc.org.uk](mailto:help@nspcc.org.uk)

### Support for staff

- Education Support Partnership: [www.educationsupportpartnership.org.uk](http://www.educationsupportpartnership.org.uk)
- Professional Online Safety Helpline: [www.saferinternet.org.uk/helpline](http://www.saferinternet.org.uk/helpline)

### Support for Pupils

- NSPCC: [www.nspcc.org.uk](http://www.nspcc.org.uk)
- ChildLine: [www.childline.org.uk](http://www.childline.org.uk)
- Papyrus: [www.papyrus-uk.org](http://www.papyrus-uk.org)
- Young Minds: [www.youngminds.org.uk](http://www.youngminds.org.uk)
- The Mix: [www.themix.org.uk](http://www.themix.org.uk)
- Shout: [www.giveusashout.org](http://www.giveusashout.org)
- The Mix: [www.themix.org.uk](http://www.themix.org.uk)

### Support for adults

- Family Lives: [www.familylives.org.uk](http://www.familylives.org.uk)
- Crime Stoppers: [www.crimestoppers-uk.org](http://www.crimestoppers-uk.org)
- Victim Support: [www.victimsupport.org.uk](http://www.victimsupport.org.uk)
- Kidscape: [www.kidscape.org.uk](http://www.kidscape.org.uk)
- The Samaritans: [www.samaritans.org](http://www.samaritans.org)
- Mind: [www.mind.org.uk](http://www.mind.org.uk)
- NAPAC (National Association for People Abused in Childhood): [www.napac.org.uk](http://www.napac.org.uk)
- MOSAC: [www.mosac.org.uk](http://www.mosac.org.uk)
- Action Fraud: [www.actionfraud.police.uk](http://www.actionfraud.police.uk)
- Shout: [www.giveusashout.org](http://www.giveusashout.org)

### Support for Learning Disabilities

- Respond: [www.respond.org.uk](http://www.respond.org.uk)
- Mencap: [www.mencap.org.uk](http://www.mencap.org.uk)
- Council for Disabled Children: <https://councilfordisabledchildren.org.uk>

### Contextual Safeguarding Network

- <https://contextualsafeguarding.org.uk/>

### Kent Resilience Hub

- <https://kentresiliencehub.org.uk/>

### Domestic Abuse

- Refuge: [www.refuge.org.uk](http://www.refuge.org.uk)
- Women's Aid: [www.womensaid.org.uk](http://www.womensaid.org.uk)
- Men's Advice Line: [www.mensadviceline.org.uk](http://www.mensadviceline.org.uk)

- Mankind: [www.mankindcounselling.org.uk](http://www.mankindcounselling.org.uk)
- Domestic abuse services: [www.domesticabuseservices.org.uk](http://www.domesticabuseservices.org.uk)
- National Domestic Abuse Helpline: [www.nationaldahelpline.org.uk](http://www.nationaldahelpline.org.uk)
- Respect Phonenumber: <https://respectphonenumber.org.uk>

### **Honour based Violence**

- Forced Marriage Unit: <https://www.gov.uk/guidance/forced-marriage>
- FGM Factsheet:  
[https://assets.publishing.service.gov.uk/government/uploads/system/uploads/attachment\\_data/file/783684/FGM\\_The\\_Facts\\_A6\\_v4\\_web.pdf](https://assets.publishing.service.gov.uk/government/uploads/system/uploads/attachment_data/file/783684/FGM_The_Facts_A6_v4_web.pdf)
- Mandatory reporting of female genital mutilation: procedural information:  
<https://www.gov.uk/government/publications/mandatory-reporting-of-female-genital-mutilation-procedural-information>

### **Criminal and Sexual Exploitation**

- National Crime Agency: [www.nationalcrimeagency.gov.uk/who-we-are](http://www.nationalcrimeagency.gov.uk/who-we-are)
- It's not okay: [www.itsnotokay.co.uk](http://www.itsnotokay.co.uk)
- NWG Network: [www.nwgnetwork.org](http://www.nwgnetwork.org)

### **Peer on Peer abuse, including bullying, sexual violence and harassment**

- Rape Crisis: <https://rapecrisis.org.uk>
- Brook: [www.brook.org.uk](http://www.brook.org.uk)
- Disrespect Nobody: [www.disrespectnobody.co.uk](http://www.disrespectnobody.co.uk)
- Upskirting – know your rights: [www.gov.uk/government/news/upskirting-know-your-rights](http://www.gov.uk/government/news/upskirting-know-your-rights)
- Lucy Faithfull Foundation: [www.lucyfaithfull.org.uk](http://www.lucyfaithfull.org.uk)
- Stop it Now! [www.stopitnow.org.uk](http://www.stopitnow.org.uk)
- Parents Protect: [www.parentsprotect.co.uk](http://www.parentsprotect.co.uk)
- Anti-Bullying Alliance: [www.anti-bullyingalliance.org.uk](http://www.anti-bullyingalliance.org.uk)
- Diana Award: [www.antibullyingpro.com/](http://www.antibullyingpro.com/)
- Bullying UK: [www.bullying.co.uk](http://www.bullying.co.uk)
- Kidscape: [www.kidscape.org.uk](http://www.kidscape.org.uk)

### **Substance Misuse**

- We are with you (formerly Addaction): [www.wearewithyou.org.uk/services/kent-for-young-people/](http://www.wearewithyou.org.uk/services/kent-for-young-people/)
- Talk to Frank: [www.talktofrank.com](http://www.talktofrank.com)

### **Mental Health**

- Mind: [www.mind.org.uk](http://www.mind.org.uk)
- Moodspark: <https://moodspark.org.uk>
- Young Minds: [www.youngminds.org.uk](http://www.youngminds.org.uk)
- We are with you (formerly Addaction): [www.wearewithyou.org.uk/services/kent-for-young-people/](http://www.wearewithyou.org.uk/services/kent-for-young-people/)

### **Online Safety**

- Childnet: [www.childnet.com](http://www.childnet.com)
- UK Safer Internet Centre: [www.saferinternet.org.uk](http://www.saferinternet.org.uk)
- Parents Info: [www.parentinfo.org](http://www.parentinfo.org)
- Internet Matters: [www.internetmatters.org](http://www.internetmatters.org)
- Net Aware: [www.net-aware.org.uk](http://www.net-aware.org.uk)
- ParentPort: [www.parentport.org.uk](http://www.parentport.org.uk)

- Get safe Online: [www.getsafeonline.org](http://www.getsafeonline.org)
- CEOP: [www.ceop.police.uk](http://www.ceop.police.uk)
- Internet Watch Foundation: [www.iwf.org.uk](http://www.iwf.org.uk)
- Think U Know: [www.thinkuknow.co.uk](http://www.thinkuknow.co.uk)
- Report Harmful Content: <https://reportharmfulcontent.com>
- Marie Collins Foundation: [www.mariecollinsfoundation.org.uk](http://www.mariecollinsfoundation.org.uk)
- NSPCC: [www.nspcc.org.uk](http://www.nspcc.org.uk)
- Stop it Now!: [www.stopitnow.org.uk](http://www.stopitnow.org.uk)
- Parents Protect: [www.parentsprotect.co.uk](http://www.parentsprotect.co.uk)

### **Radicalisation and hate**

- Educate against Hate: [www.educateagainsthate.com](http://www.educateagainsthate.com)
- Counter Terrorism Internet Referral Unit: [www.gov.uk/report-terrorism](http://www.gov.uk/report-terrorism)
- True Vision: [www.report-it.org.uk](http://www.report-it.org.uk)